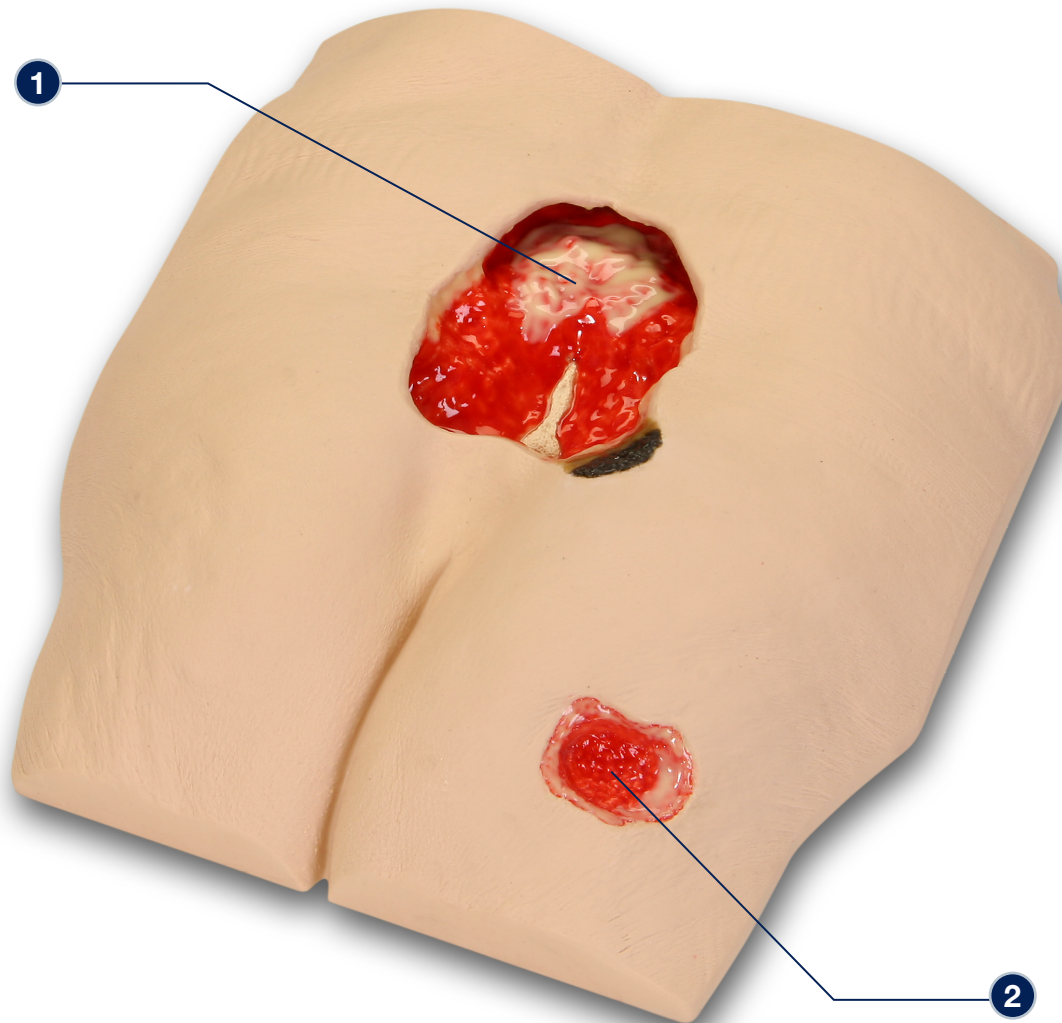


'Stan' Stage IV Pressure Ulcer Model™ - 0970



The following pressure ulcers* are presented on 'Stan' Stage IV Pressure Ulcer Model™

- 1** Stage IV Pressure Ulcer with eschar, subcutaneous fat, undermining, tunneling, slough, exposed bone (with osteomyelitis) and rolled wound margins
- 2** Early* Stage III Pressure Ulcer with subcutaneous fat and pale granulation tissue (Early* as there is no wound contraction present)

** We have included the most likely etiology-based descriptions, but realize many wounds can appear in the same location, having different etiologies. The definitive diagnosis is up to the clinician and interprofessional wound care team.*

Care Instructions: To clean your model VATA recommends soap and warm water. Some customers have found applying a barrier/skin prep can give them the adhesion they are looking for.